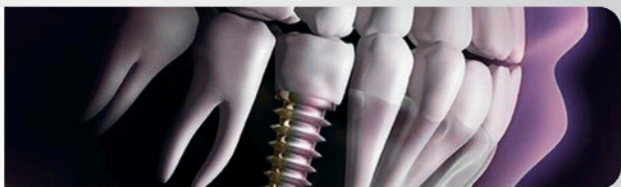


SMART DENTAL SOLUTIONS

#1 SUPPLIER IN THE MIDDLE EAST

DENTAL IMPLANTS



**Neo
Biotech**



IS-III Active Fixture

Super hydrophilic



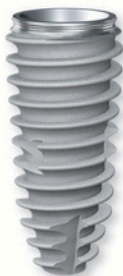
IS-III Narrow

Diameter (Ø)	Length (mm)
3.0	8.5/10.0/11.5/13.0

IS-III

Diameter (Ø)	Length (mm)
3.5	8.5/10.0/11.5/13.0
4.0/4.5/5.0	7.3/8.5/10.0/11.5/13.0

IS-II Active Fixture



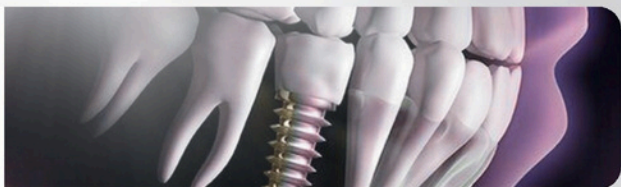
IS-II

Diameter (Ø)	Length (mm)
3.5	8.5/10.0/11.5/13.0
4.0/4.5/5.0	7.3/8.5/10.0/11.5/13.0

IS-II s-wide

Diameter (Ø)	Length (mm)
5.5	7.3/8.5/10.0/11.5/13.0

DENTAL IMPLANTS



Fortis

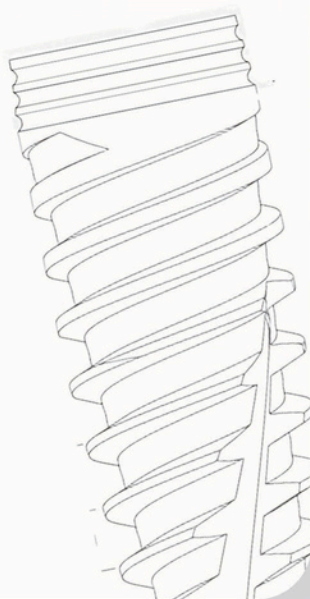


Experience the precision and reliability of
Premium German Implants

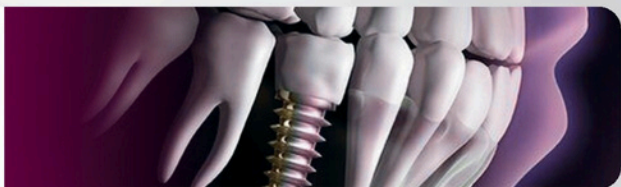


Diameter (Ø)	Length (mm)
3.6 \ 4.2 \ 5.0	8.0/10.0/11.5/13.0/15.0

- Fully compatible with **Neobiotech** for ease and flexibility of use
- Micro Rings
- Safe Insertion



DENTAL IMPLANTS



Since 2015 in Egypt, Trusted Korean implants

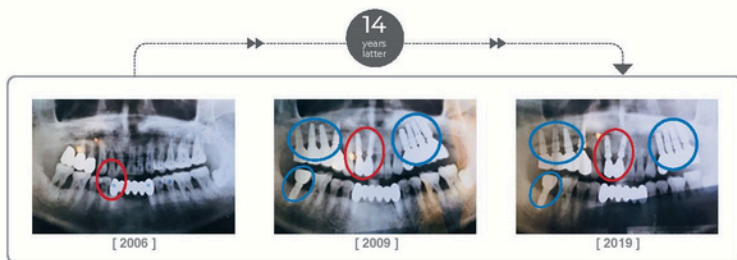


Mini

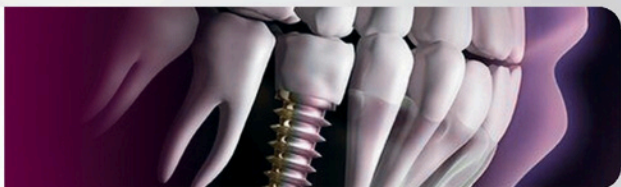
Diameter (Ø)	Length (mm)
3.0/3.5	8.5/10.0/11.5/13.0

Regular

Diameter (Ø)	Length (mm)
4.0/4.5/5.0	7.3/8.5/10.0/11.5/13.0



DENTAL IMPLANTS



The leading French dental implant manufacturer

The Naturactis & Naturall + dental implant lines can be used in a wide range of indications



Naturall+ ANATOMICAL IMPLANT

- Bone level
- Tapered implant
- High primary stability

INDICATIONS

- All areas -All bone densities
- Sinus -Floor region -Post
- Extraction surgery

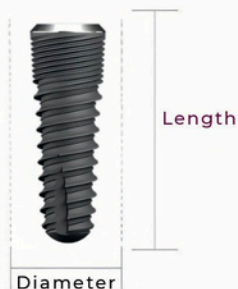


Naturactis NATURALLY ACTIVE IMPLANT

- Subcrestal placement
- Cylinroconical implant
- High primary stability
- Strong apical anchoring

INDICATIONS

- Post-extraction surgery
- Areas with low bone density (D3-D4)



Narrow Implant

Diameter (Ø)	Length (mm)
Ø3	10.0 /12.0 /14.0

Diameter (Ø)	Length (mm)
3.5\4.0	8.0/10.0/12.0/14.0
4.5/5.0	6.0/8.0/10.0/12.0/14.0

DENTAL IMPLANTS



A New Solution for Clinicians: Simplified Design & Connection for Long-Term Success

Double start threads, where thread advances the implant 1.6mm in 3.6 diameter implant & 2 mm with all other diameters with each rotation. In contrast to s-Fix implants advance approximately 0.9mm with each rotation.

S.L.A Surface Treatment

Apical drilling blades facilitate insertion into minimal prepared sites.



The coronal region of the s-Fix 4/4.5/5/6mm diameter implants are back tapered, a design that allows for maximum bone volume around the implant platform.

Implant body design The expanding tapered body is designed to attain high stability even in compromised bone situations.



Diameter (Ø)	Length (mm)
3.5	8.5/10.0/11.5/13.0
4.0/4.5/5.0	7.3/8.5/10.0/11.5/13.0

ALL IMPLANTS PROSTHETIC CHART



Abutments

HEX ABUTMENT



ANGLED ABUTMENT



HEALING ABUTMENT



TEMPORARY
ABUTMENT



UCLA ABUTMENT



LAB ANALOG



BALL ABUTMENT



TI BASE



PICK-UP
IMPRESSION COPING



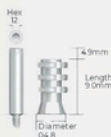
TRANSFER
IMPRESSION COPING



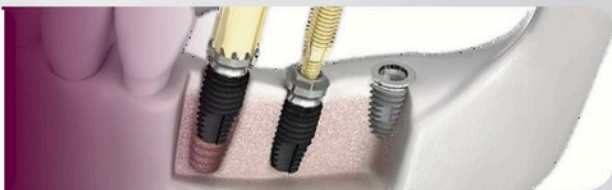
SCANBODY



MULTI UNIT ABUTMENT



IMPLANT SOLUTION KITS



**Neo
Biotech**



IS Full Kit

One kit for all implant system



Ridge-Wider Kit

The ultimate ridge splitting solution in narrow alveolar ridge.

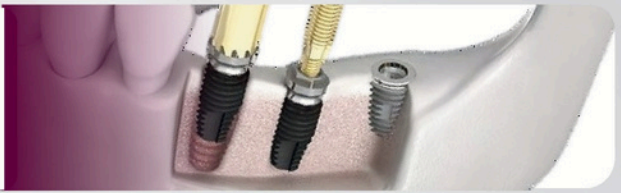


Neo NaviGuide

A digitized implant treatment solution that assists implantologists to place implants based on restorative needs and surgical requirements.



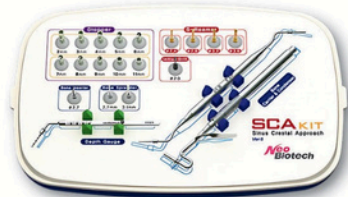
IMPLANT SOLUTION KITS



**Neo
Biotech**



SCA Kit



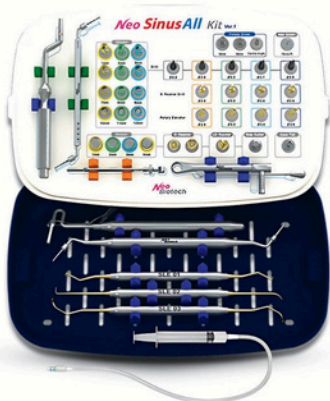
A surgical tool for sinus elevation by perforation inferior cortical wall and lifting sinus membrane without any membrane tearing.

SLA Kit



A surgical tool for sinus elevation by perforation lateral wall and lifting sinus membrane without any membrane tearing.

Sinus All Kit



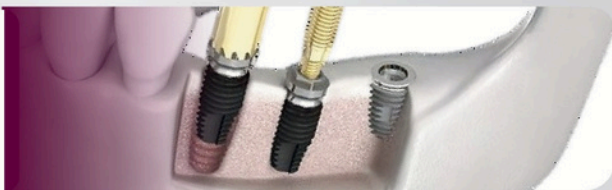
Sinus All kit is combines SCA Kit, SLA Kit and the surgical kit into a single kit.

AnyCheck



Dental implant stability meter (tapping-motion) for measuring stability of an implant without disconnecting the healing abutment.

IMPLANT SOLUTION KITS



**Neo
Biotech**



SCREW REMOVAL KIT



Remove a fractured screw without
damaging the fixture

FIXTURE REMOVAL KIT



A universal solution for the safe
removal of failed implants

PROSTHETIC KIT



Offers a complete solution for implant prosthetics,
including hex drivers and abutment positioners,
designed for the placement, connection, and removal
of dental implant prosthetic components

SURGICAL ACCESSORY KIT



Serves as an invaluable assistant to surgeons,
offering various components
that aid in meticulous surgical planning

TISSUE AUGMENTATION SOLUTIONS



OneGraft

ONEALLO GRAFT®
(HUMAN GRAFT)



ONEXENO
GRAFT®(EQUINE)



ONEXENO GRAFT®
BOVINE



COLLAGEN MEMBRANE
BIOIMPLON



ONEHEART®
MEMBRANE



ONETI® MEMBRANE



ONEPTFE® NON-RESORBABLE MEMBRANE



INTRAORAL SCANNER



SHINING 3D
DENTAL



Aoralscan Elite **WIRELESS**

IPG Without Limits

Revolutionizing precision and efficiency in dental implantology. This unique technology integrates photogrammetric scanning directly into intraoral procedures, enhancing the precision and efficiency of full-mouth edentulous implants, particularly in All-on-X procedures.

- Great Accuracy
- Great Efficiency
- Simplified Workflow for Doctors
- Great Experience for Patients



Superior
Scanning with
Wi-Fi6



Stylish and
Sophisticated
Design



Extended
Battery Life



Effortless
Transition

Aoralscan Elite

IPG Intraoral photogrammetry

IPG + SCAN

Two-in-One System



High Precision



High Efficiency



INTRAORAL SCANNER



SHINING 3D
DENTAL



Aoralscan 3 **WIRELESS**

- No cable constraints.
Enjoy the freedom of wireless scanning.
- Equipped with the latest Wi-Fi 6 technology, the Aoralscan 3 Wireless gives you the same fast scanning experience as a wired connection without lag.
- Aoralscan 3 Wireless provides reliable, consistent, and accurate scan output



Go Wireless



Next-level
Software
Functions



Long-lasting
Battery Life



Fast and Stable

Aoralscan 3

IPG Without Limits

Exceptional, smart and elegant, Aoralscan 3 improves the overall clinical experience. It allows users to easily acquire vivid digital impressions in a faster and more accurate way. Moreover, Aoralscan 3 comes with a wide range of different intelligent functions, guaranteeing more comfortable chairside experience and efficient clinic-lab collaboration.

- Brand New Design
- Fast Speed
- High Accuracy
- Powerful AI Process
- Intuitive Communication



INTRAORAL SCANNER



SHINING 3D DENTAL

Aoralscan L

Aoralscan L optimizes hardware structure and software algorithms to ensure high accuracy and quality, providing realistic and reliable digital impressions for denture applications

- Ergonomics design with easy handling
- Fast scan speed
- Excellent scan accuracy
- Motion sensing for easy control



MetiSmile

MetiSmile is the first face scanner developed and produced by SHINING 3D exclusively for dentistry. It can quickly capture the facial information to create 3D model and assist in clinical diagnosis with its advanced software.



Fast Scan Speed



Ortho Simulation



Mandibular Trajectory Tracking



Facial Features Measurement & Comparison



Automatic Alignment of Intraoral and Facial Data

IMPLANT MOTORS



TRAUS SIP10 IMPLANT MOTOR

Power and precision in every implant procedure!
Experience top performance and comfort!

The TRAUS SIP10 Implant Motor with The built-in LED fiber optic system Handpiece.



X-CUBE IMPLANT MOTOR

A powerful, user-friendly surgical motor system used for general oral surgery, implantology as well as for all kinds of micro surgery procedures.



Traus SUS20 Piezo Single Engine

- Fiber optic handpiece
- Precise & fast cutting
- Intuitive user interface
- Powerful performance
- Designed for patient safety



DENTAL LOUPES



UNIVET

PRECISION, CRAFTSMANSHIP, AND INNOVATION.

With 28+ years of experience, Univet stands as the premium choice for elite dentists. Since 1997, Crafted 100% in Italy, the loupes blend precision, ergonomic comfort, and iconic design, a true symbol of Italian craftsmanship.



MACTO

EXPERIENCE THE LUXURY OF JAPANESE OPTICS

MACTO fuses innovation with simplicity, crafting loupes from lightweight titanium frames and Japanese premium lenses to help professionals achieve consistent, high-accuracy results with less strain and more focus.



ERGOVISION

14 YEARS OF CLARITY

Ergovision is a trusted dental optics brand with 14 years of presence in the Egyptian market, known for ergonomic loupes and crystal clear vision, supporting smarter, longer, and more confident clinical performance.



LAB SOLUTIONS



ivoclar

The Programat ceramic furnaces

Modern | Intuitive | Smart



CS 3



P310 G2



EP 3010 G2

IPS e.max Ceram

Wonderful & Natural | Veneering ceramics



Transpa Ti 1



Dentin



Transpa
Clear/Neutral/Blue



Opal Effect



Dentin



Essence



Incisal BL



Gingiva

IPS e.max® Press

The proven lithium disilicate press ceramic



LT



MT



HT



Alox Plunger



ALOX PLUNGER SEPARATOR



INVESTMENT RING SYSTEM

IPS e.max CAD

The highly esthetic lithium disilicate glass-ceramic



GET IN TOUCH!

